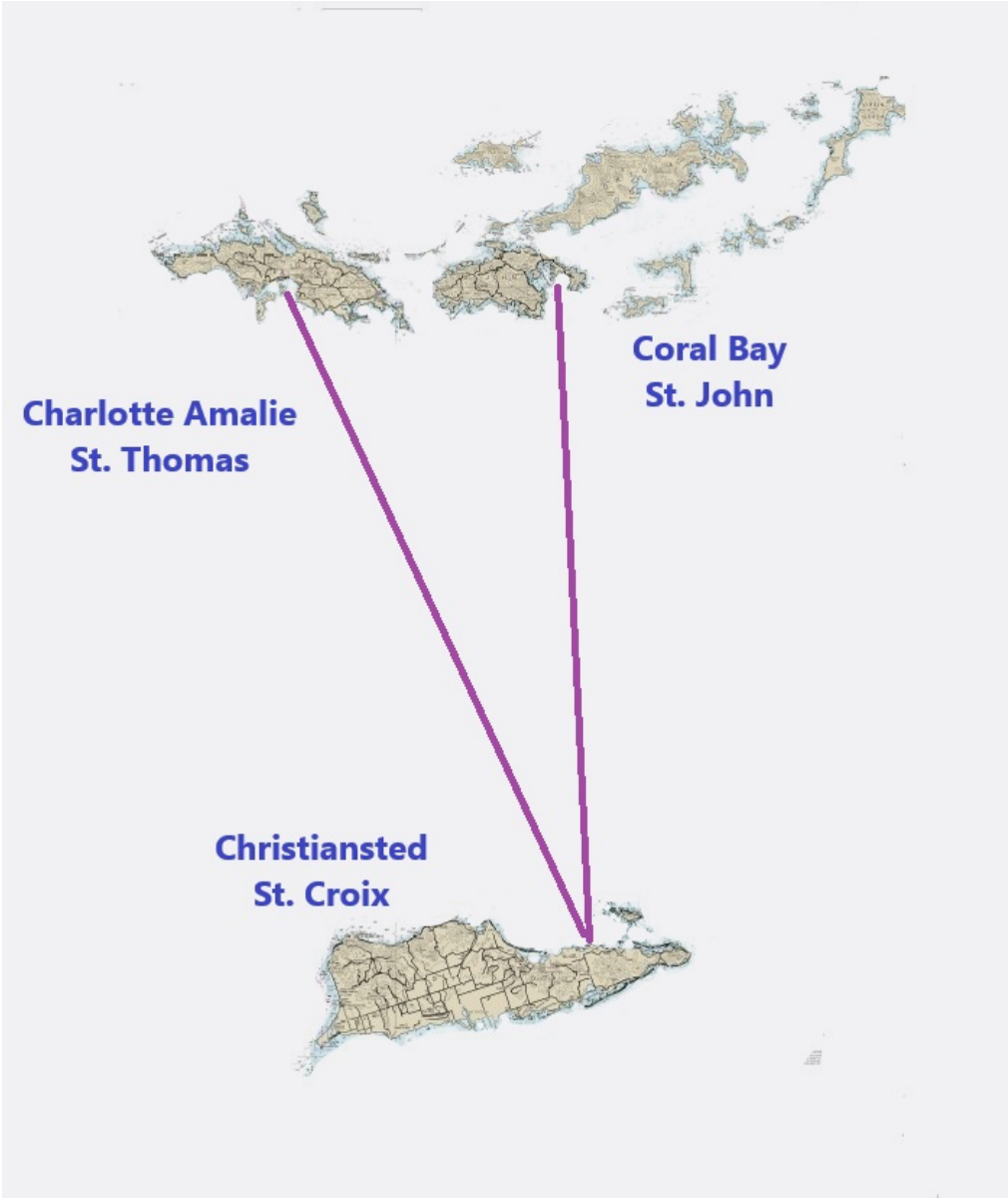


2023 Three Sheets Regatta – Chart Images

Approximate Start and Finish Lines



November 30 – December 3, 2023
St. John – St. Croix – St. Thomas, USVI



LEG 1 – ST. JOHN, CORAL BAY START LINE INFORMATION

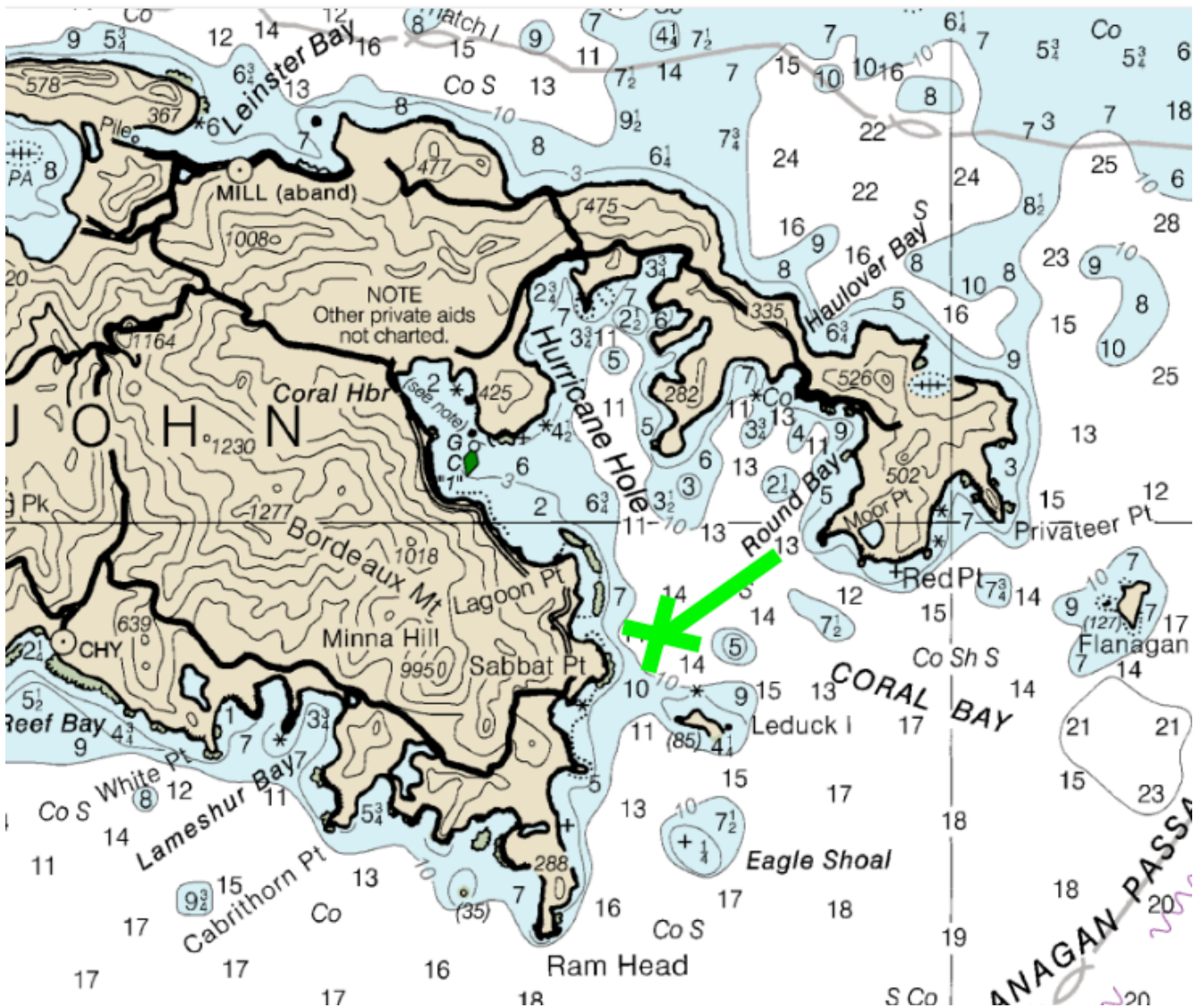
Please be in Coral Bay and tune in to VHF channel 72 no later than 7:30 am on Friday, December 1.

The Race Committee intends to make courtesy announcements identifying the location of the starting area beginning at approximately 7:30 am. Notices to competitors, including postponement, will be broadcast on VHF 72 by the Race Committee.

The starting line will be between an orange flag on the signal boat and a nearby mark, to be communicated prior to the first warning signal by the Race Committee.

The first warning signal for the Leg 1 Start will be Friday, December 1 at 8:00 am.

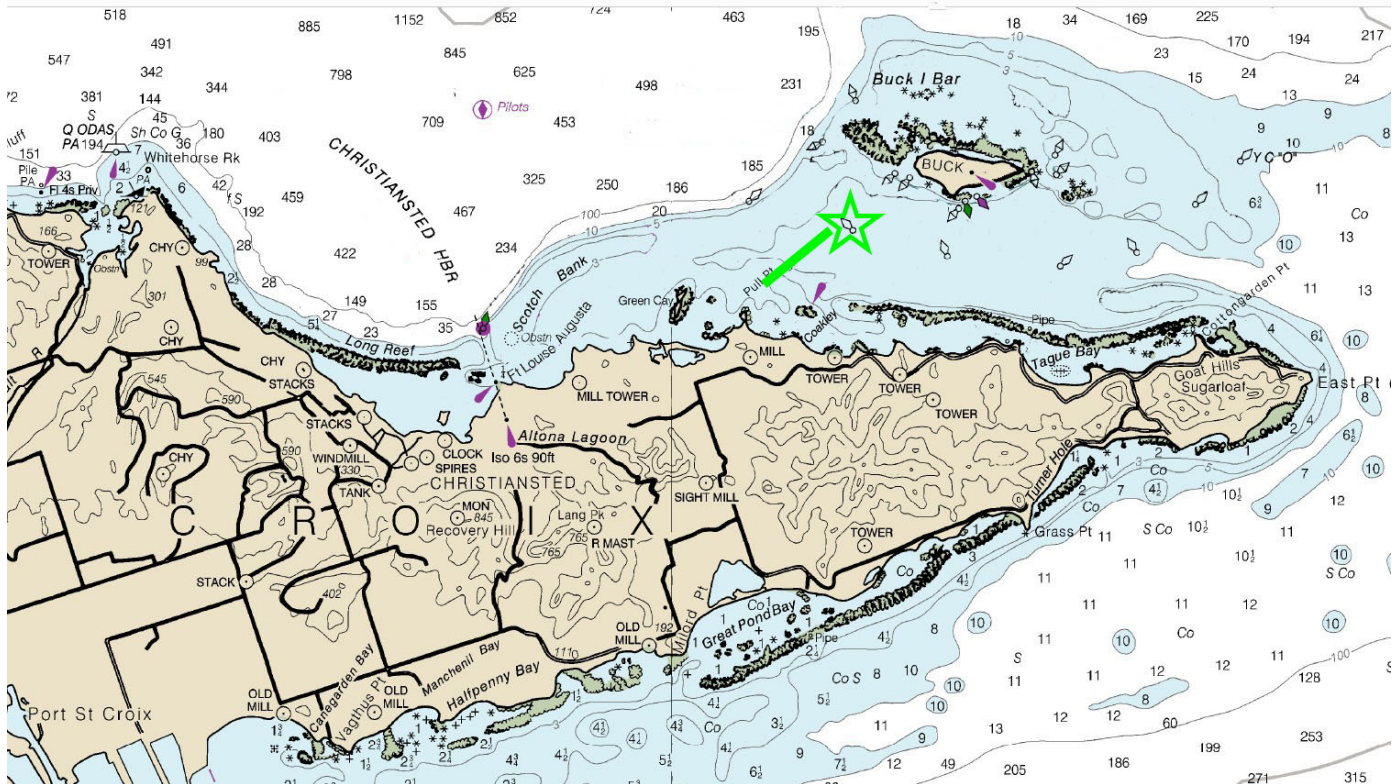
The Start will be a 5-minute flag sequence as defined by the RRS 26. If a sound signal accompanies the flag sequence, it is as a courtesy.



LEG 1 – ST. CROIX, PULL POINT/BUCK ISLAND FINISH LINE INFORMATION

The St. Croix finish line will be between a blue flag on the porch of the green-roofed house on Pull Point and the west end of Buck Island. Nearby marks may be an inflatable shape, a mooring ball, or an existing navigational mark.

After finishing, anchor in Christiansted Harbor and plan to meet your fellow sailors in the Comanche Club Hotel's Palm Garden for the post-race celebration that begins at 5:30 pm. The awards presentation will begin at approximately 6:00.



LEG 2 – ST. CROIX, BUCK ISLAND START LINE INFORMATION

Please be near the Buck Island Channel and tune in to VHF channel 72 no later than 7:30 am on Sunday, December 3.

The Race Committee intends to make courtesy announcements identifying the location of the starting area beginning at approximately 7:30 am. Notices to competitors, including postponement, will be broadcast on VHF 72 by the Race Committee.

The starting line will be between an orange flag on the signal boat and a nearby mark, to be communicated prior to the first warning signal by the Race Committee.

The first warning signal for the Leg 2 Start will be Sunday, December 3 at 8:00 am.

The Start will be a 5-minute flag sequence as defined by the RRS 26. If a sound signal accompanies the flag sequence, it is as a courtesy.

LEG 2 – ST. THOMAS FINISH LINE INFORMATION

The St. Thomas finish line will be in the entrance to Charlotte Amalie Harbor, between a nearby mark and 26' MV *On Time*, off Point Knoll. The finish line shown in the chart image below is approximate and may be subject to change. When approaching St. Thomas, please call the Race Committee on channel 72 for more detailed instructions.

After finishing, anchor in Charlotte Amalie Harbor or tie up to the quay. Make your way to The Box Bar in Yacht Haven Grande for the post-race celebration that begins at 5:30 pm. The awards presentation will begin at approximately 6:00.

